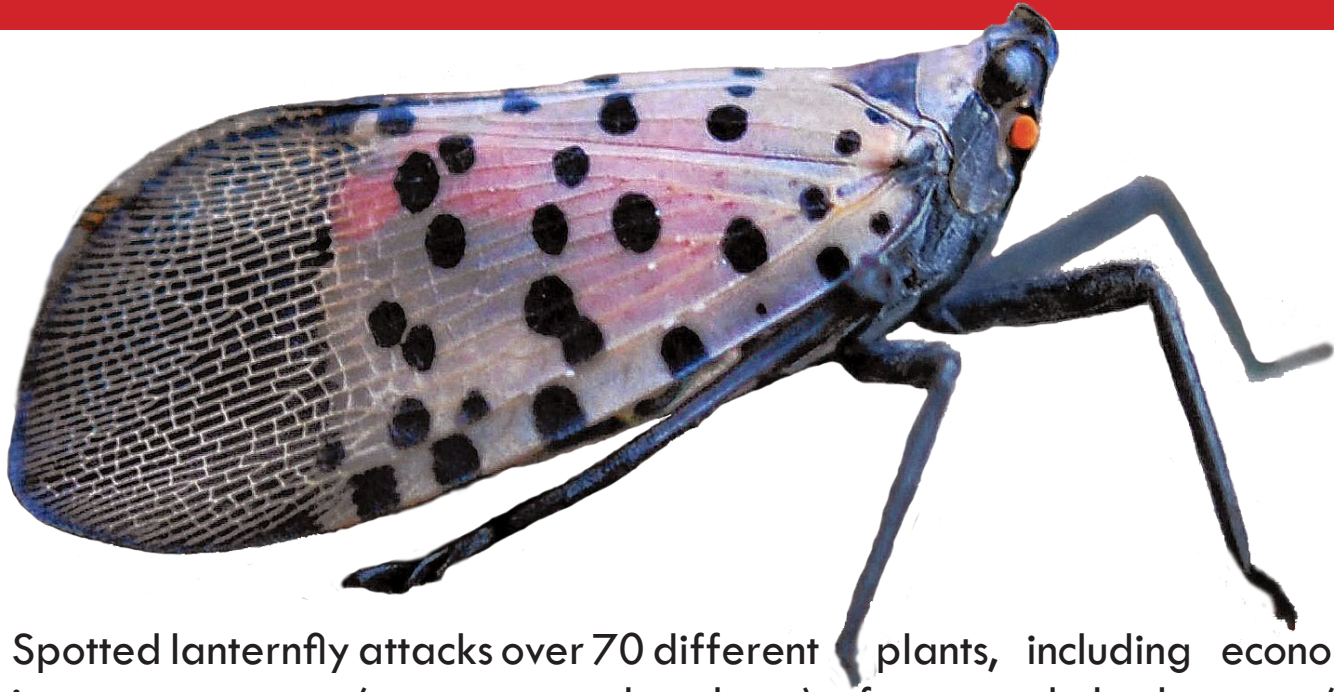


STOP THE SPREAD OF SPOTTED LANTERNFLY



Spotted lanternfly attacks over 70 different plants, including economically important crops (grapes, apples, hops), forest and shade trees (maple, willow, birch), and the invasive tree-of-heaven.

This pest has now been spotted in several parts of Massachusetts.

WE NEED YOUR HELP TO STOP IT BEFORE IT BECOMES ESTABLISHED



Egg masses
(Sept.-June)



Early nymphs
(April-July)



Late nymphs
(July-Sept.)



Adults
(July-Dec.)



HAVE YOU SEEN THIS INSECT? GET A PHOTO AND REPORT IT!

[MASSNRC.ORG/PESTS/SLF](https://massnrc.org/pests/slf)



Scan this QR Code, or call 617-626-1779

