

EAB JEOPARDY!



Adapted from a design from the James Madison Center, JMU



EAB JEOPARDY!



BEETLE BIOLOGY	WHO NEEDS TREES?	BEETLES IN DISGUISE	HURTING OUR HARDWOODS	MANAGEMENT EFFORTS
<u>20</u>	<u>20</u>	<u>20</u>	<u>20</u>	<u>20</u>
<u>40</u>	<u>40</u>	<u>40</u>	<u>40</u>	<u>40</u>
<u>60</u>	<u>60</u>	<u>60</u>	<u>60</u>	<u>60</u>
<u>80</u>	<u>80</u>	<u>80</u>	<u>80</u>	<u>80</u>
<u>100</u>	<u>100</u>	<u>100</u>	<u>100</u>	<u>100</u>

BEETLE BIOLOGY – 20

“EAB” IS THE
ABBREVIATION FOR THIS
INSECT





BEETLE BIOLOGY – 40

THESE ARE TWO
IDENTIFYING
CHARACTERISTICS OF EAB



BEETLE BIOLOGY – 60

ALTHOUGH IT CAN FLY AS
FAR AS 3 MILES, THE EAB IS
MORE LIKELY TO TRAVEL TO
PREVIOUSLY UNINFESTED
AREAS THIS WAY



BEETLE BIOLOGY – 80

THIS IS THE COLOR OF THE
BODY OF THE EAB
(UNDER THE WING COVERS)



BEETLE BIOLOGY - 100

THIS IS THE SCIENTIFIC
NAME FOR THE EMERALD
ASH BORER



WHO NEEDS TREES? – 20

THIS IS THE EAB'S
HOST TREE



WHO NEEDS TREES? – 40

ONE EXAMPLE OF WHAT
CAN BE DONE TO PROTECT
A HOST TREE FROM EAB



WHO NEEDS TREES? - 60

THESE ARE EXAMPLES OF
PRODUCTS THAT WILL BE
LOST IF WE LOSE ALL OF
OUR ASH TREES



WHO NEEDS TREES? – 80

EAB ARRIVED IN THE USA
IN THIS TYPE OF MATERIAL



WHO NEEDS TREES? – 100

THIS IS A METHOD OF
CREATING A "SINK TREE"
TO ATTRACT EAB



BETLES IN DISGUISE – 20



1



2

THIS PHOTO
MOST
ACCURATELY
DEPICTS EAB



3



BEETLES IN DISGUISE – 40

THE PHOTO THAT SHOWS
AN EAB



BEETLES IN DISGUISE – 60

THESE CHARACTERISTICS
INDICATE THAT THIS IS NOT
EAB:



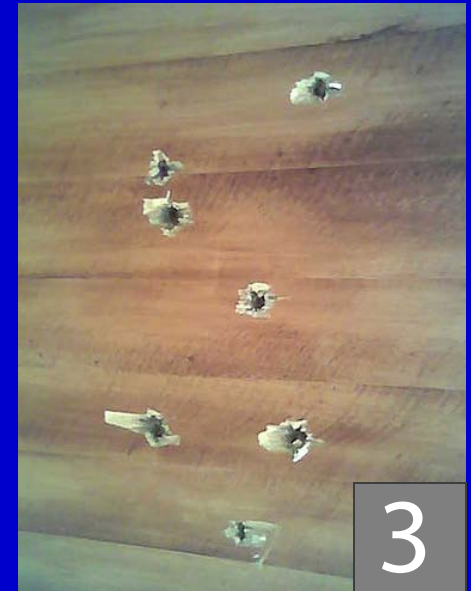
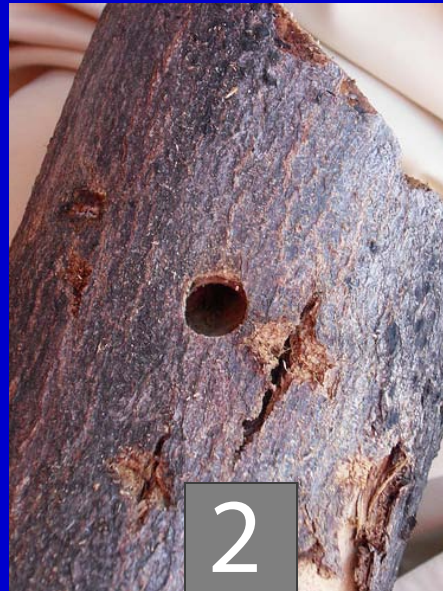
BEETLES IN DISGUISE – 80

YOU CAN TELL THAT THIS
(CHOOSE ONE) DAMAGE
WAS ACTUALLY CAUSED BY
EAB BECAUSE...



BEETLES IN DISGUISE – 100

THIS (PICK ONE) EXIT HOLE
WAS CAUSED BY EAB



HURTING OUR HARDWOODS - 20

DEFINE “LARVAL GALLERY”



HURTING OUR HARDWOODS – 40

MOST TREE DAMAGE IS
CAUSED DURING THIS
PHASE OF THE EAB LIFE
CYCLE



HURTING OUR HARDWOODS – 60

A SIGN THAT A HOLE IN A
TREE WAS MADE BY EAB



HURTING OUR HARDWOODS – 80

DEFINE FRASS



HURTING OUR HARDWOODS – 100

THESE ARE THREE SIGNS
THAT AN ASH MAY BE
INFESTED WITH EAB



MANAGEMENT EFFORTS – 20

THIS IS ONE WAY THAT YOU
CAN HELP STOP THE
SPREAD OF THE EMERALD
ASH BORER



MANAGEMENT EFFORTS – 40

AS OF 2012, THIS IS THE
NUMBER OF STATES
INFESTED WITH EAB



MANAGEMENT EFFORTS – 60

KNOWING WHERE EAB ARE
PRESENT IS IMPORTANT
FOR THIS REASON



MANAGEMENT EFFORTS – 80

THIS IS THE REASON WE
HAVE WASP WATCHERS



MANAGEMENT EFFORTS – 100

THIS IS WHAT IS DONE TO A
TREE WHEN IT IS FOUND TO
BE INFESTED WITH EAB

