

# ASIAN LONGHORNED BEETLE LOOK-ALIKES

(all insects shown approximately to scale, sizes given do not include antennae)

## Asian longhorned beetle

(*Anoplophora glabripennis*)

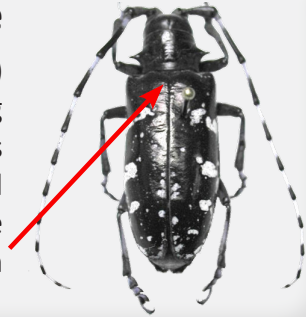
$\frac{3}{4}$  –  $1\frac{1}{2}$  inch long

Shiny black, bright white spots

Long antennae, banded

black and white

Black scutellum



## Whitespotted sawyer

(*Monochamus scutellatus*)

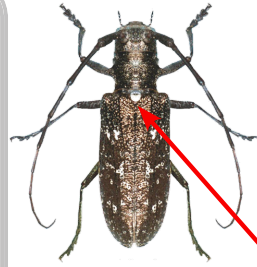
$\frac{3}{4}$  – 1 inch long

Dull or bronzy-black, may be

mottled with whitish patches

Long faintly banded antennae

White scutellum



## Northeastern sawyer

(*Monochamus notatus*)

$\frac{3}{4}$  –  $1\frac{1}{4}$  inch long

Mottled light brown/white,

no distinct spots



## Eyed click beetle

(*Alaus oculatus*)

1 -  $1\frac{3}{4}$  inch long

Black with white speckles;

Black “eye spots”



## Brown prionid

(*Orthosoma brunneum*)

1 –  $1\frac{1}{2}$  inch long

Light chestnut brown, no spots



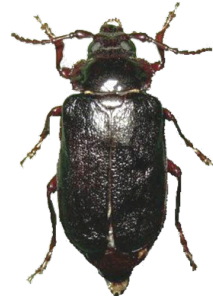
## Broadnecked root borer

(*Prionus laticollis*)

1 –  $1\frac{1}{2}$  inch long

Black with no white markings

Solid black antennae



## Longhorned Beetle

(*Graphisurus fasciatus*)

$\frac{1}{3}$  –  $\frac{2}{3}$  inch long

Dark with gray/light brown mottling

Antennae banded white and black



## Western conifer seed bug

(*Leptoglossus occidentalis*)

About  $\frac{3}{4}$  inch long

Various shades of brown with a distinct geometric pattern on wings

Last segment of back legs flared out



For more information about the Asian longhorned beetle, or to report a sighting, visit [mass.gov/agr/alb.htm](http://mass.gov/agr/alb.htm) or call toll-free 1-866-702-9938



Flyer adapted from a design by the Maine Department of Agriculture

**Photos:** Asian longhorned beetle: Pennsylvania Dept. of Conservation and Natural Resources - Forestry Archive, Bugwood.org. Whitespotted sawyer, Northeastern sawyer, Broadnecked root borer: Michael Bohne, USDA Forest Service. Eyed click beetle: Tom Murray, bugguide.net. Brown prionid: Kristin Riolo, Priceless Memories, Bugwood.org. Graphisurus fasciatus: Jennifer Forman Orth, Massachusetts Dept. of Agricultural Resources. Western conifer seed bug: Giancarlo Dessi, Wikimedia Commons