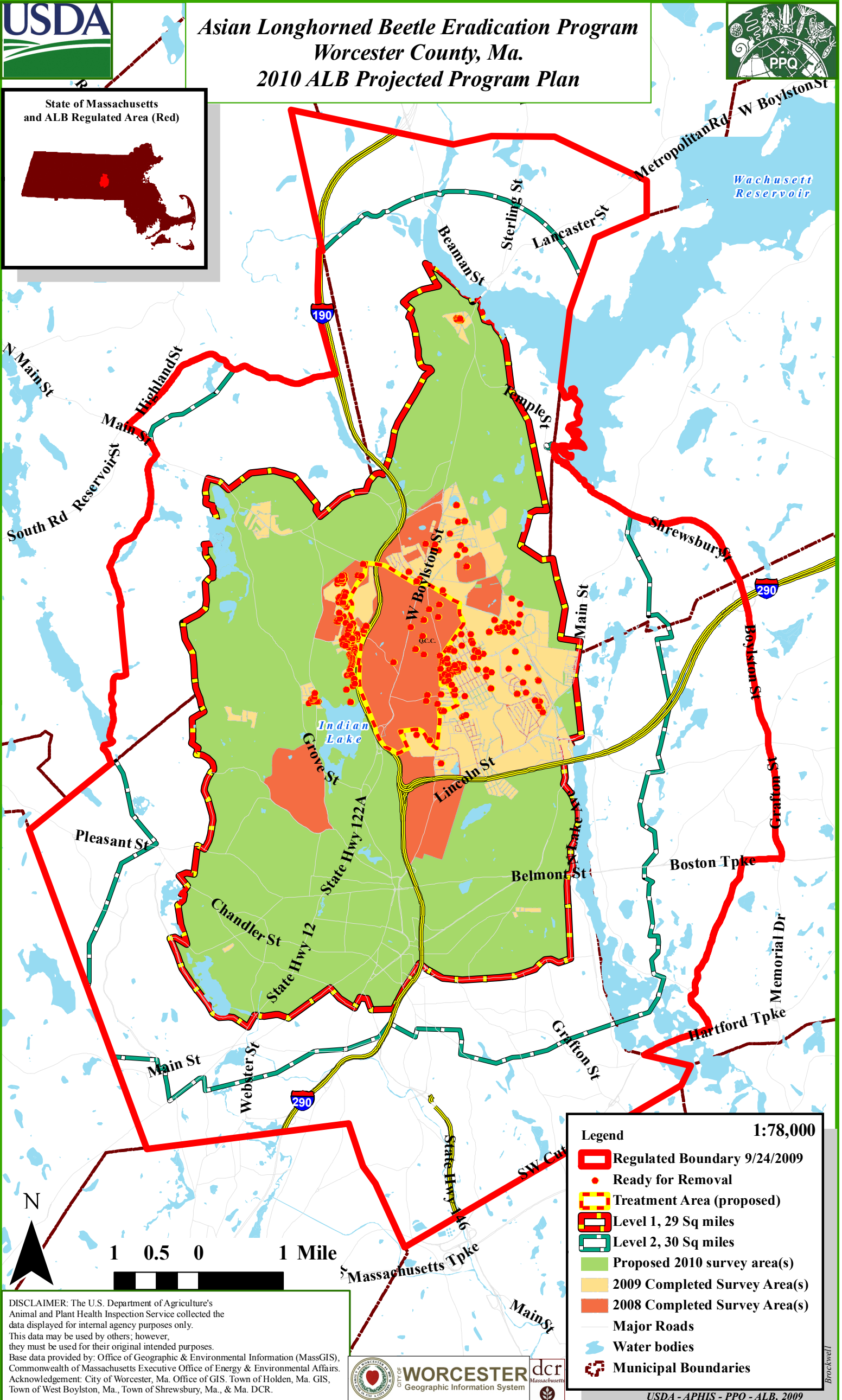
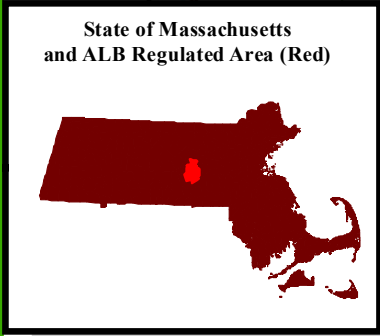




Asian Longhorned Beetle Eradication Program Worcester County, Ma. 2010 ALB Projected Program Plan



Legend 1:78,000

- Regulated Boundary 9/24/2009
- Ready for Removal
- Treatment Area (proposed)
- Level 1, 29 Sq miles
- Level 2, 30 Sq miles
- Proposed 2010 survey area(s)
- 2009 Completed Survey Area(s)
- 2008 Completed Survey Area(s)
- Major Roads
- Water bodies
- Municipal Boundaries

DISCLAIMER: The U.S. Department of Agriculture's Animal and Plant Health Inspection Service collected the data displayed for internal agency purposes only. This data may be used by others; however, they must be used for their original intended purposes. Base data provided by: Office of Geographic & Environmental Information (MassGIS), Commonwealth of Massachusetts Executive Office of Energy & Environmental Affairs. Acknowledgement: City of Worcester, Ma. Office of GIS. Town of Holden, Ma. GIS, Town of West Boylston, Ma., Town of Shrewsbury, Ma., & Ma. DCR.

